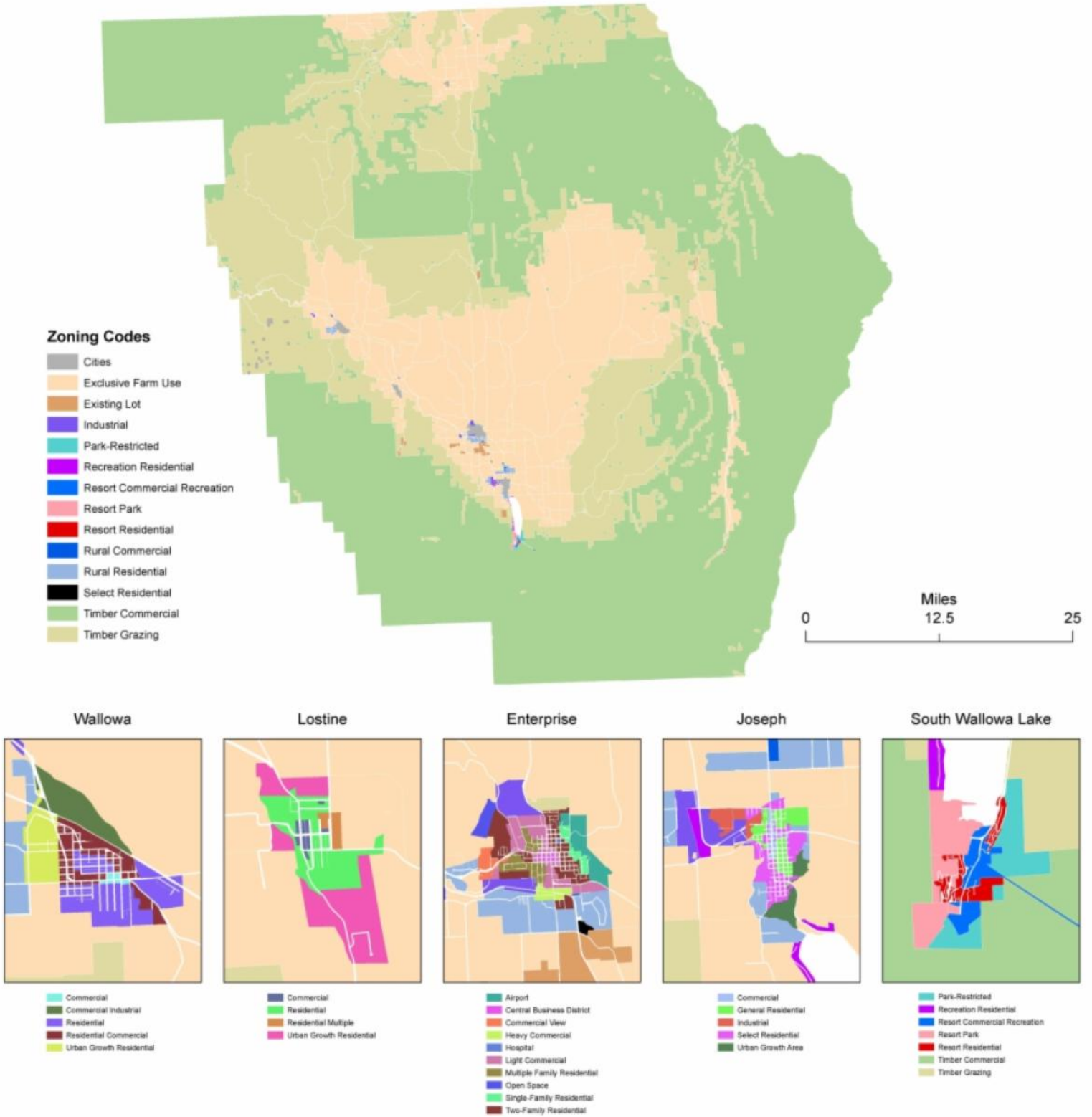


Map Images

Wallowa County Zoning



DOWNLOAD SPEEDS VARY DEPENDING ON TYPE OF CONNECTION DISCLAIMER: The maps provided through this web page provide a visual display of data for your convenience. Every

reasonable effort has been made to assure the accuracy of the maps and associated data. Wallowa County makes no warranty, representation or guarantee as to the content, sequence, accuracy, timeliness or completeness of any of the data provided herein. The user of these applications should not rely on the data provided herein for any reason. Wallowa County explicitly disclaims any representations and warranties, including, without limitation, the implied warranties of merchantability and fitness for a particular purpose. Wallowa County shall assume no liability for any errors, omissions, or inaccuracies in the information provided regardless of how caused. Wallowa County shall assume no liability for any decisions made or actions taken or not taken by the user for the applications in reliance upon any information or data furnished hereunder. To be sure of complete accuracy, please check with County staff for updated information. All maps below can be purchased at their original size from the GIS Department.

Old Maps



Supporting Documents

City of Enterprise 2.98 MB

City of Joseph 1.11 MB

City of Lostine 55.24 KB

City of Wallowa 361.21 KB

Flora Unincorporated Community 981.1 KB

Imnaha Unincorporated Community 1.41 MB

Joseph School District 562.75 KB

Minam Unincorporated Community 399.93 KB

South Wallowa Lake 4.82 MB

Troy School District 158.66 KB

Wallowa County School Districts 814.16 KB